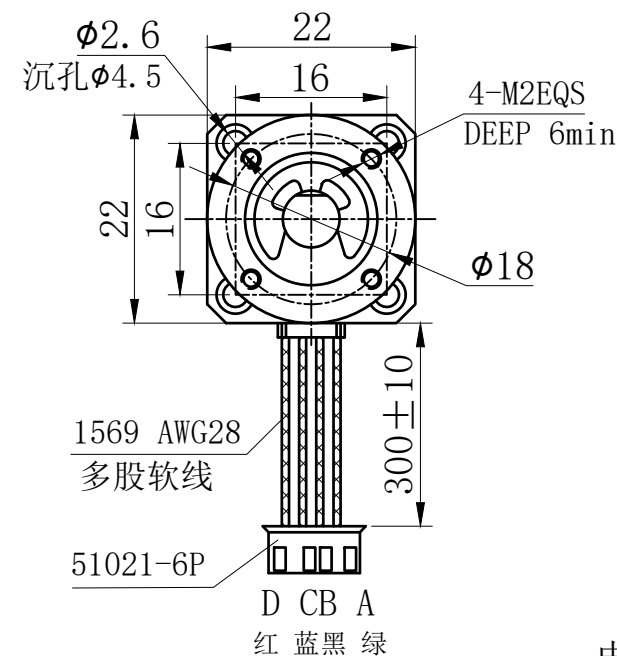
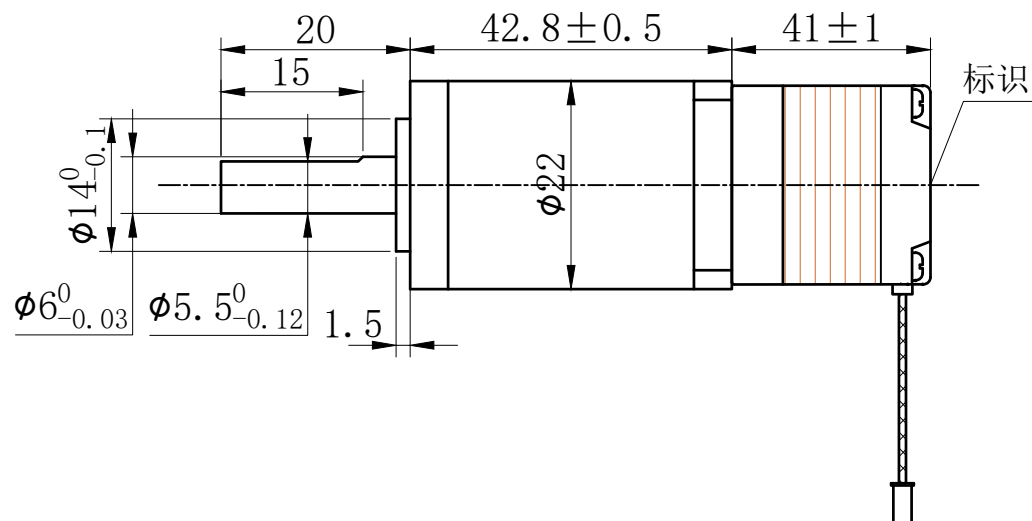


符合RoHS指令要求  
CONFORM TO RoHS DNSTRUCTIONS

A



B

A

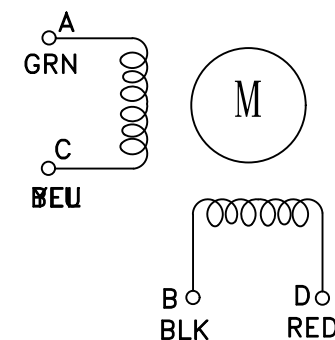
B

C

特性 <b>character</b>	规格 <b>specifications</b>
1. 相数 Number of phase	2
2. 步 距 角 Step Angle	1.8°
3. 额定电压 Rated Voltage	DC 4.4V
4. 额定电流 Rated current	DC 0.8A
5. 保持转矩 Holding Torque	≥ 30mN.m
6. 相电阻 Winding resistance	5.5±15% ohm(20℃)
7. 相电感 Winding inductaoce	1.5±20% mH (1kHz)
8. 转向（轴伸向看） Direction of rotation	A-AB-B-CW
9. 转动惯量 Rotor Inertia	3 g.cm <sup>2</sup>
10. 电机重量 Weight	0.1Kg
11. 绝缘等级 Insulation class	B Class

減速比: 1/189

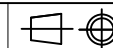
电气原理图  
winding drawing



D

D

# UMot

视图  
view

1 : 1

重庆优摩特科技有限公司  
Chongqing UMot technology Co.Ltd.

AO

型号 Model	20HS6401-22PG189J-300C
-------------	------------------------

---

1

2

3

4

5

E